









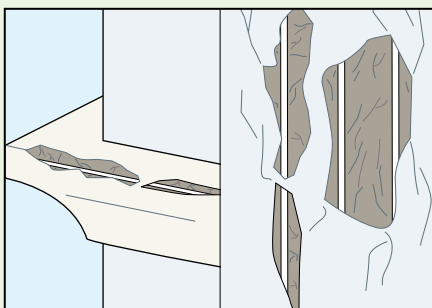
# RESISTO UNIFIX RAPID

**QUICK- SETTING MORTAR WITH COMPENSATED SHRINKAGE  
AND IMPROVED ADHESION FOR UNIVERSAL USE  
AND QUICK APPLICATION FOR CONCRETE REPAIRS**

	ENVIRONMENT		METHOD OF USE			PRECAUTIONS
						
	ECO GREEN	RECYCLABLE	MIX MECHANICALLY	APPLICAZIONE CON FRATTAZZO	APPLY BY TROWEL	STORAGE: IN A DRY PLACE

## PROBLEM

### SMOOTH AND EXECUTE QUICK SMALL REPAIRS ON CONCRETE



Quick repair, fixing and grouting problems often occur when carrying out various repair work on concrete and in normal building site work; what is needed consequently is a ready-to-use and quick-setting mortar with superior characteristics of workability and application.

## SOLUTION

**RESISTO UNIFIX RAPID** resolves all work that has to be carried out quickly and, thanks to its high level of workability, it can be used in numerous fields of application, on walls and floors and without using formworks. **RESISTO UNIFIX RAPID** is ready mixed in powder form, ready to use, containing high resistant cement, selected inert material (max granulometry 0.5 mm), and additives which guarantee excellent handling and adhesion to surfaces. **RESISTO UNIFIX RAPID** has a high thixotropic level for use in small and thick-layer repair jobs without having to use formworks. **RESISTO UNIFIX RAPID** has a quick-setting time, high mechanical resistance and elastic modulus suitable for repair work.



## APPLICATION FIELDS

**RESISTO UNIFIX RAPID** is suitable for numerous applications for reinstating concrete, for repair, fixing and reconstruction work over reinforcement plates and for levelling, skimming and grouting work.

## ADVANTAGES

- High level of workability and easy application thanks to the ready-to-use formula that avoids possible site errors.
- High level of adhesion to the concrete support, elastic modulus and thermal expansion similar to concrete.
- High thixotropic level and compensated shrinkage, making it easy to apply without using formworks and without cracking problems.

## METHOD OF USE

### • SURFACE PREPARATION

Concrete surfaces must be prepared in order to achieve good bonding of **RESISTO UNIFIX RAPID** mortar. It is therefore necessary to remove any loose parts and those without consistency by way of chiselling, brushing or high pressure water cleansing. Traces of oil, release agents, rust and dirt in general must be removed. Any steelwork which becomes visible must be cleaned and made chemically non-reactive by using cement mortar and Strato 4900 (1). Soak the substrate without creating films of water, which can be possibly eliminated using compressed

air or a sponge.

### • MIX PREPARATION

**RESISTO UNIFIX RAPID** is ready to use and needs only to be mixed with 18% of clean water (4.5 litres per 25 kg sack). Mix either in an ordinary cement mixer or low speed mixer adding **RESISTO UNIFIX RAPID** to the water and mixing for 3 minutes. Do not continue mixing longer than the time necessary to obtain a smooth mix. Remember that water is an important component in mortar and must be added in the recommended quantities so as not to compromise properties such as mechanical resistance,

shrinkage etc.

### • APPLICATION

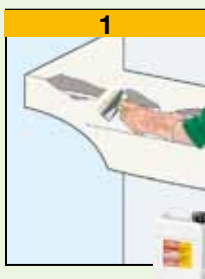
The product is applied with a trowel and inox spatula without having to use formworks (3). **RESISTO UNIFIX RAPID** can be used for small thick-layer and localised repairs.

## COVERAGE

18 kg/m<sup>2</sup>×cm of thickness.

## PRECAUTIONS

- Do not expose the material to the sun in hot weather.
- Use cold water in summer and water at approx 20°C in winter.
- Minimum application temperature +5°C.
- Do not add water once the mix has started to set.
- Do not add other materials to **RESISTO UNIFIX RAPID** such as cement, inert material or additives.
- In hot weather keep the surface of the mortar damp for at least 24 hours.
- Do not apply as plaster for thickness on wide surfaces: in those cases use **RESISTO UNIFIX** or **RESISTO REP**.
- Store in a dry place.



## TECHNICAL CHARACTERISTICS

### RESISTO UNIFIX RAPID

Class and typology (EN 1504-3)	R3 / PCC
Aspect	powder
Colour	grey
Particle size	0-0,7 mm
Mix water	18%
Apparent volume mass of powder	1,25 kg/liter
Apparent volume mass of fresh mortar (EN 1015-6)	1,95 kg/liter
Life once mixed (*)	ca. 15 min.
Thermal compatibility to frost-thaw cycles with thawing salts (EN 13687-1)	≥1,5 MPa
Elastic modul (EN 13412)	≥15 GPa
Capillary water absorption (EN 13057)	≤ 0,5 kg/m <sup>2</sup> •h <sup>0,5</sup>
Adherence bond (EN 1542)	≥1,5 MPa
Compression strength (EN 12190)	≥25 MPa
Bending strength (EN 196/1)	≥5 MPa
Chloride ion content (EN 1015-17)	≤0,05%
Carbonatation resistance (EN 13295)	Specifica superata
Reaction to fire (EN 13501-1)	classe A1
Minimum application thickness	1 mm
Maximum thickness per layer	10-40 mm (piccole riparazioni)
Application	manual
Application temperature	min +5°C ÷ max +35°C
Store in original packaging in a dry place	12 months

Test conditions: temperature 23±2°C, 50±5% R.H. and air velocity in test area <0.2 m/s.

(\*) The times indicated will be longer or shorter as the temperature drops or rises.

RESISTO UNIFIX RAPID complies with the principles defined in EN 1504-3 (general principles for the use of products and systems).

ing the numerous possible uses and the possible interference of conditions or elements beyond our control, we assume no responsibility regarding the results which are obtained. The purchasers, of their own accord and under their own responsibility, must establish the suitability of the product for the envisaged use.

## SAFETY REGULATIONS

- While mixing, protect lungs with a suitable mask.
- Protect hands and eyes with gloves and goggles.
- In case of contact with the eyes, wash immediately and thoroughly with water.

## PACKAGING

### RESISTO UNIFIX RAPID

- 25-kg Sack
- 5-kg Can

The figures shown are average indicative figures relevant to current production and may be changed or updated by INDEX S.p.A at any time without previous warning. The advice and technical information provided, is what results from our best knowledge regarding the properties and the use of the product. Consider

• FOR ANY FURTHER INFORMATION OR ADVICE ON PARTICULAR APPLICATIONS, CONTACT OUR TECHNICAL OFFICE  
• IN ORDER TO CORRECTLY USE OUR PRODUCTS, REFER TO INDEX TECHNICAL SPECIFICATIONS

**index**  
Construction Systems and Products

Via G. Rossini, 22 - 37060 Castel D'Azzano (VR) - Italy - C.P.67 - Tel. 045.8546201 - Fax 045.512444

INTERNET: [www.indexspa.it](http://www.indexspa.it)  
E-MAIL: [index.export@indexspa.it](mailto:index.export@indexspa.it)

